

Think Outside the Ballroom

Your event is more than just tables and chairs. That's why we start with you, we work to understand your event needs, and deliver not just an event, but an experience. Together, let's imagine the possibilities.

Overlooking the Mississippi River, the Estuary Conference and Event Venue sets the style and sophistication standard for any special occasion or symposium. The Estuary features over 6,000 square feet of stunning meeting and event space, including a gallery with breathtaking views of the Mississippi River. Our five conference rooms and Riverfront Gallery with pre-function area allow for a variety of setups for meetings, break-out sessions, workshops or retreats. The outdoor terrace overlooking the Water Campus is a stylish place for al fresco receptions and parties while the Newton B. Thomas Landing stretches out over the river offering your guests indelible views of beautiful sunsets.

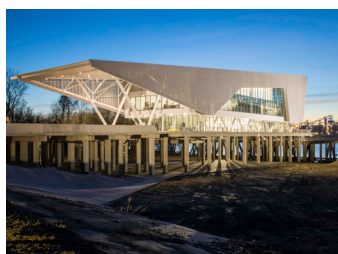


We Make Event Planning Easy

Whether you're planning a business gathering or a social event, we can help make it unforgettable. As a host, you care deeply about sharing food and company while making memories and creating inspirations. No matter what your vision, our talented event planning team will take care of the details. From venue layouts and audiovisual requirements to catering menus, we make meetings and events seamless and successful.

About the Water Campus

The Water Campus, currently a \$60 million urban development in downtown Baton Rouge, is the home of the Center for Coastal & Deltaic Solutions, the Water Institute of The Gulf, the Coastal Protection and Restoration Authority, and the LSU Center for River Studies. A world-class research and engineering center, the Water Campus serves as a hub for public, private, nonprofit and academic collaboration to develop innovative solutions for challenges facing coastal communities.

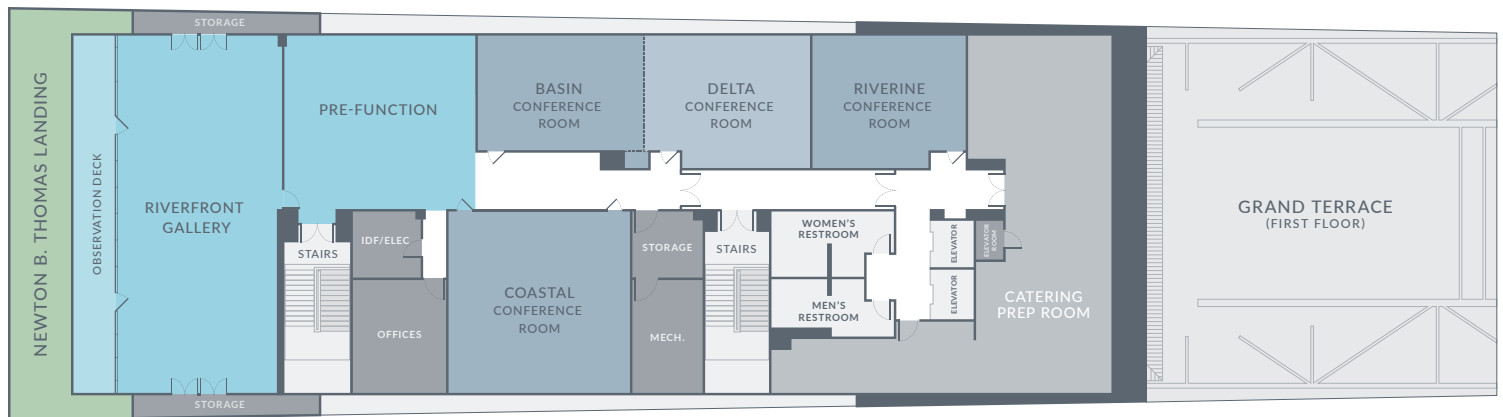


Capacity Chart



Name of Room	Square Footage	Room Size	Classroom	Theater	Banquet	Reception	Conference	U-Shape	H-Square
Riverfront Gallery	1,845	64' x 29'	100	200	150	200	60	51	60
Pre-Function	948	31' x 34'	-	75	60	75	-	-	-
Riverfront Gallery & Pre-Function	2,793	-	-	275	210	275	NA	NA	NA
Basin Conference Room	680	21' x 30'	36	60	50	55	30	24	30
Delta Conference Room	677	23' x 29"	36	60	50	55	30	24	30
Basin & Delta Conference Rooms	1,357	21' x 59'	75	135	100	135	54	48	54
Coastal Conference Room	1,004	31' x 32'	60	110	70	80	48	36	48
Riverine Conference Room	632	23' x 27'	27	60	24	NA	30	24	30
Newton B. Thomas Landing	-	-	-	-	-	400*	-	-	-
Grand Terrace	-	-	-	-	-	200*	-	-	-
All Space	-	-	-	-	-	-	-	-	-

*approximate



- Business Meetings, Conferences and Corporate Events
- Fundraisers and Nonprofit Galas
- Rehearsal Dinners, Wedding Ceremonies & Receptions
- Graduation, Anniversary and Birthday Parties
- Private Dinners and Banquets
- Holiday Celebrations
- Reunions and University Events
- Staff Retreats and Board Meetings
- Lunch and Learns
- Training Seminars
- Continuing Education