



Weddings at the Estuary

The Estuary at The Water Campus is Baton Rouge's premier wedding and event venue. The grand space, with floor to ceiling windows overlooking the beautiful Mississippi River, easily hosts weddings ranging from 100-250 people. Larger weddings and events we can be managed using the vast outdoor dock space on the river. This stunning and truly unique venue hosts multiple events throughout the year. Contact us soon as wedding and celebration dates are limited.

The Water Campus is a collaborative environment for those working in the areas of water resource management, deltaic living, coastal restoration, and flood protection that help coastal and deltaic communities around the world.



FAQ's and General Event Guidelines

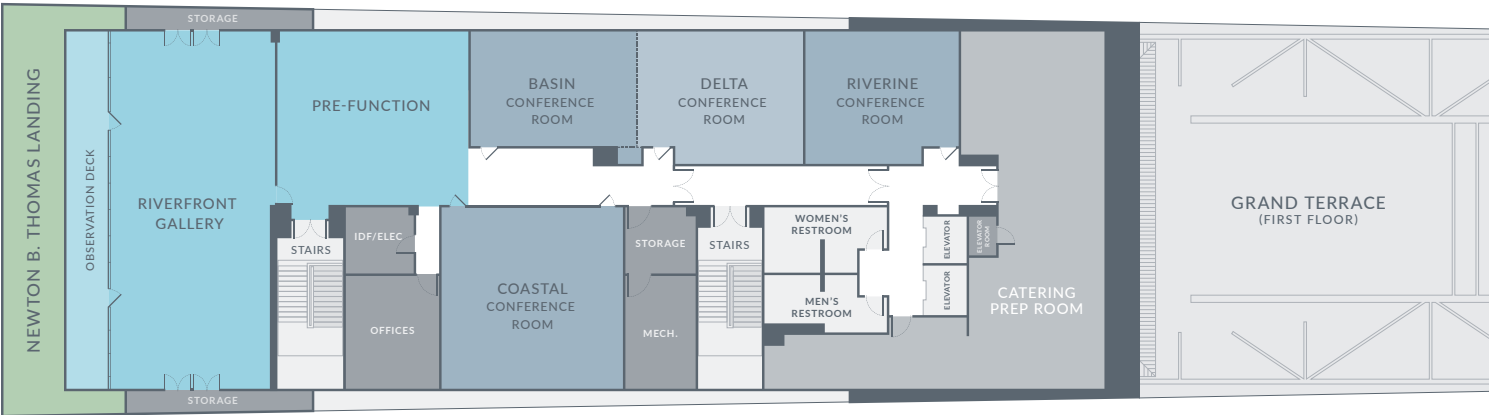
- A professional event planner or primary coordinator must be used for all weddings. The wedding planner will be the sole liaison to The Estuary staff.
- The Estuary will only contract one year prior to the event.
- Receptions are based on 3-4 hours. Event time may not extend past 11:30pm.
- Set-up is permitted 2 hours prior to the start of the event. If more time is necessary and the space is available, there will be an additional \$150 set up fee per additional hour.
- All space rental is subject to a 22% service charge for the setup and breakdown of your event. It includes tables, chairs, buffets, and bars that are all designed to meet the surrounding elements of the building for indoor events.
- Tables, chairs and tents must be rented through a third party vendor for all outdoor events.
- Disposable dinnerware/glassware required for all outdoor events.
- Helium balloons, sparklers, flower petals, glitter, confetti, rice or birdseed are not allowed.
- Parking is free in the parking lot across the street from the venue. Delivery trucks may load/unload at the venue entrance but must be removed once loaded/unloaded.
- Valet service is available at the top of the ramp through our third-party vendor only.
- A Certificate of Insurance is required for every event.
- A security fee of \$500 will be assessed for all night time events that begin after 5pm. These services will be contracted by The Estuary and the fee will be included on the Group's final event invoice.



Capacity Chart

	□	↶↷	🍷	\$
Name of Room	Square Footage	Room Size	Reception	Rental
Riverfront Gallery & Pre-Function	2,793	–	100	\$3,500+
Basin & Delta Conference Rooms	1,357	21' x 59'	≥ 150	\$1,500+
Coastal Conference Room	1,004	31' x 32'	≥ 200	\$1,500+

150-200 people an additional room is required (Basin/Delta or Coastal). Over 200 people 2 additional rooms are required. The capacities are based on the consideration of space for band/DJ, dance floor, bars, food tables, cake tables, photo booths, etc. For larger events, the dock can be tented as large as 40' x 80'. The space can be rented without a tent depending on the time of the year and weather permitting. A deposit of \$1,000 is required and will be applied to the final event invoice.



Approved Caterers

- Unique Cuisine
- Chef John Folse Events
- Heirloom Cuisine Chef
- City Pork Hospitality
- Drakes Catering

* All events are required to use our approved caterers. No exceptions.
*All wedding sites are scheduled by appointment only Monday- Thursday 9am -4pm and are based on event schedules.



Third Party Vendors are Required for:

- Linens
- Music
- Flowers
- Drapery
- Lighting
- Valet
- Photography
- Bakery
- Risers (Staging)
- Outdoor Seating
- Other décor
- Tents

